

REGAL PRINCESS



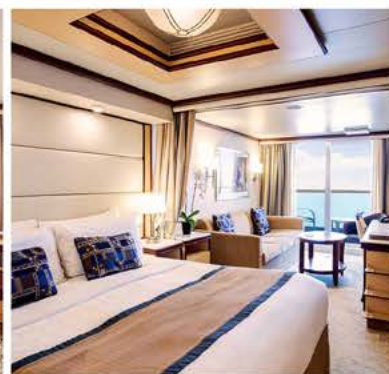
refit 2018 | 143,700 Ton | 3.215 Guest



CARIBBEAN ISLANDER 13D

2025 | Mar 23 - Apr 4

Day	Port	Arrive	Depart	Day	Date/Port	Arrive	Depart
1	GALVESTON TEXAS	EMBARK	3 PM	8	At Sea	-	-
2	At Sea	-	-	9	ANTIGUA	8 AM	5 PM
3	COZUMEL MEXICO	9 AM	6 PM	10	TORTOLA BRITISH VIRGIN ISLANDS	7 AM	4 PM
4	At Sea	-	-	11	At Sea	-	-
5	At Sea	-	-	12	At Sea	-	-
6	ARUBA	9 AM	10 PM	13	FT. LAUDERDALE FLORIDA	6 AM	DISEMBARK
7	CURACAO	8 AM	10 PM				



INSIDE

IF : SGD **770** p.p

BALCONY

BF : SGD **1576** p.p

MINI SUITE

MF : SGD **2327** p.p

Exclude: Port charges & tax SGD 675p.p, tipping USD 16/night/person
visa/travel insurance, land tour package, flight ticket, transfer packages, dll